

fresh ideas.

guest center  
message center  
parallel  
synctech



health and healing | hospitality

## guest center

### healthcare

The patient room Guest Center provides an adaptable environment for family, caregivers and visitors. It combines a work surface with storage, task light and power receptacle for convenient phone, laptop and MP3 charging. Its modular panels accommodate options including tack panels, writing surfaces, and areas for mounting flat-panel monitors, artwork or accessories.

The Guest Center is wall mounted, requiring minimal space – utilizing otherwise unused areas of the room. Choice of desktop materials include laminate, glass and Avonite®. Back panel finish is laminate. Specialty materials, custom sizes and configurations are available.

Manufactured with sustainable materials that advance our commitment to create healthy environments.



GC2 - Light Cherry, Avonite® top, COM tack panels.  
Size: 29½w x 59h x 19d



Panels provide areas for flat screen monitor mounting, artwork or accessories.



GC3 - Honey Maple, glass top, COM tack panels, optional LED task light.  
Size: 29½w x 81h x 19d







GC1 - Maple, Avonite® top, back-lit specialty panel insert.  
Size: 29½" w x 35" h x 19" d

## guest center

### hospitality

Created to meet the specialized needs of hospitality designers. The Guest Center provides a functional work environment for lobby, guest room, mixed use space and business centers. Featuring simple clean lines, the Guest Center becomes the focal point and complements any interior, whatever the design approach. With an unlimited palette of specialty and standard materials available, it's easy to customize the Guest Center for your specific requirements.

Choice of work surface materials include laminate, glass and Avonite®. Back panel finish is laminate. Specialty materials, custom sizes and configurations are available.



Flip down door access for desk storage.



Glass top ½" thick, flat polished edge.



Power receptacle included.



Optional LED task light.

**The Guest Center  
creates an ideal touch  
down space within  
public WiFi areas.**



GC3 - Mahogany, Avonite® top, back-lit specialty panel inserts.  
Size: 29½" w x 81" h x 19" d

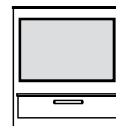
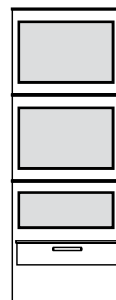
Guest Center with one, two or three panel inserts, work surface and storage.  
Panel Inserts: Fabric, ColorCork, COM tack panels, Panelyte®, and specialty materials.

Size:

1 panel: 29½" w x 35" h x 19" d

2 panel: 29½" w x 59" h x 19" d

3 panel: 29½" w x 81" h x 19" d



health and healing | corporate

# message center

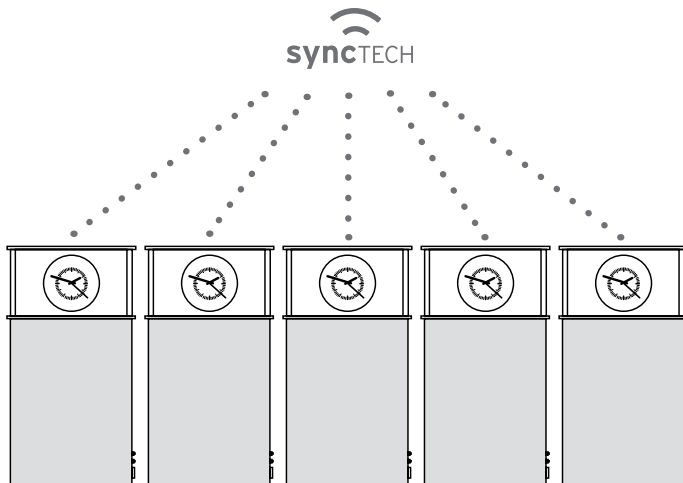
## corporate

A stylish way to communicate with a glass writing surface, analog clock and concealed marker storage. Using a minimal amount of wall space, the Message Center with white tempered safety glass performs perfectly and erases easily. Choice of PPP color, wood and laminate finishes.

Available with optional SyncTech wireless time technology for facility-wide time and emergency messaging. Transmitting synchronized time throughout your facility, SyncTech eliminates time related issues and liabilities associated with manual time maintenance, see page 14. Available in a variety of designer clock graphics from the Peter Pepper collection.



Card insert retainer,  
marker and eraser storage.



MCG3224, Light Cherry  
Size: 32w x 24h x 4d



MC-Light Cherry, PPP color clock panel, clock face 32.  
Size: 24w x 45h x 4d



MC - Mahogany, PPP color aluminum metallic trim, laminate clock panel, clock face 14.  
Size: 24w x 45h x 4d





Message Center with custom graphics.

## message center

### healthcare

Improve patient communications with the Message Center. By integrating a glass writing surface, analog clock and marker storage, it reduces clutter while using a minimal amount of wall space.



Clear glass in front of the clock allows staff to communicate relevant schedules to the patient.

Each side frame has a versatile card retainer to display cards and personal items. Choice of PPP colors, wood and laminate finishes, including all PPP clock graphics.

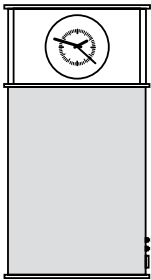




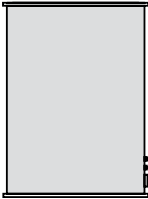
MC - Maple trim, PPP color clock panel, clock face 9.  
Size: 24w x 45h x 4d



Available with SyncTech wireless time technology,  
see page 14.



MC  
24w x 45h x 4d



MCG2432  
24w x 32h x 4d



MCG3224  
32w x 24h x 4d



health and healing | corporate

# parallel

## healthcare

Parallel enhances the overall convenience and comfort of patients, caregivers and visitors with a modular system of products that support what people do everyday: personal communication, display and storage.

Manufactured with sustainable materials that advance our commitment to create healthy environments.

## corporate

An ideal solution for corporate facilities and individual offices. Select just the elements you need from glass or HPL writing surfaces, tack boards, mirrors, clocks, coat hooks, utility shelves and file or magazine pockets.

Parallel mounts horizontally or vertically to add that extra 'off the desk' organization. Finished in natural anodized aluminum.



H4816-2N, COM tack panel 16w, glass writing surface 32w, hooks and shelf.  
Size: 48w x 18½h



H4820-3, ColorCork, glass writing surface and clock panel with hooks, shelf and chart/magazine pocket.  
Size: 48w x 23½h  
Rack: 11¼w x 12h  
Front retainer: 10h



H4816-2N, fabric tack panel 16w, glass writing surface 32w, hooks, shelf and chart/magazine pocket.  
Size: 48w x 18½h  
Rack: 11¼w x 12h  
Front retainer: 10h

**parallel**  
health and healing | corporate

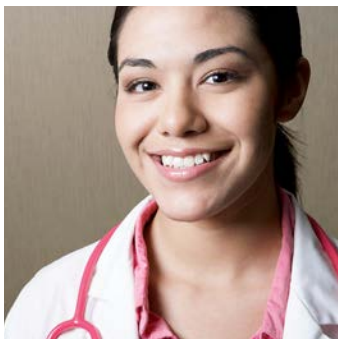


H6020-3, fabric tack panel 20w, glass writing surface 20w, ColorCork 20w, shelf and hooks.  
Size: 60w x 23½h





H3216-2, glass writing surface 16w, mirror 16w, shelf and extended top rail with hooks.  
Size: 32w x 18½h



V1616-1, mirror 16w, hooks and shelf.  
Size: 20w



HRC24, triple hook and shelf.  
Size: 24w





HRC24, (3) triple hooks. 24w



VRC24, (6) hooks. 24h



HR32, magazine pocket, shelf, and (2) single hooks. 32w

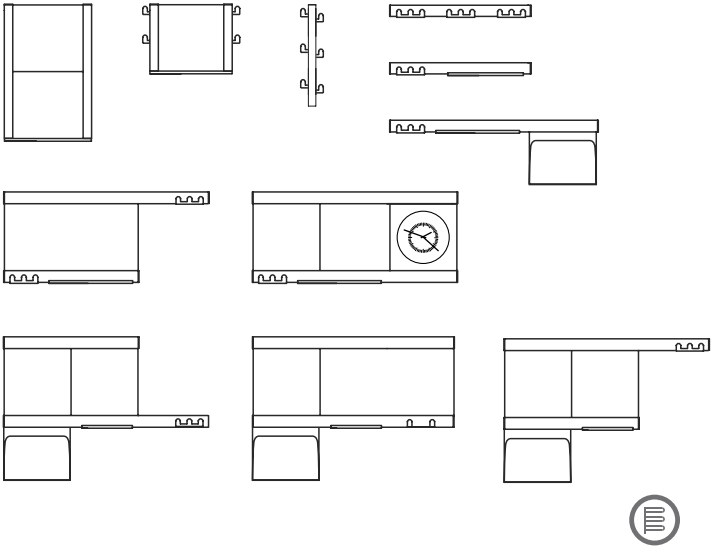


V2040-2N, glass writing surface 20w with custom graphics, COM tack panel 20w and shelf. Size: 23½w x 40h

## parallel

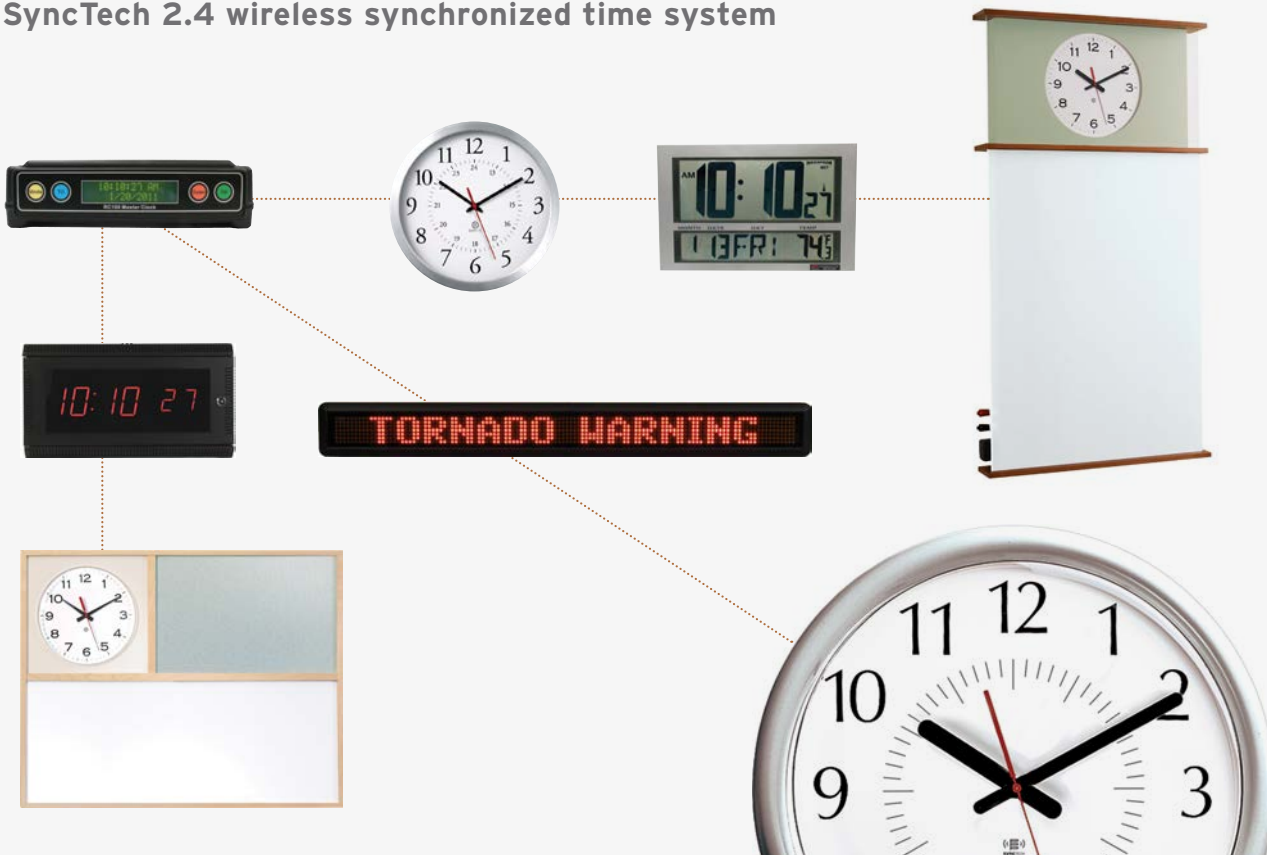
Horizontal and vertical models with panel options:  
Glass or HPL writing surfaces, tack boards,  
mirrors, clocks and chart/magazine pockets.  
Rail, shelf and coat hooks: natural anodized aluminum.

Panel Heights: 16" + 20"	
Panel Widths:	Rail Sizes:
16	16
20	20
24	24
32	32
Custom	40
	48
	60
	72
	Custom





## SyncTech 2.4 wireless synchronized time system



### SyncTech®

The SyncTech® 2.4GHz Wireless Synchronized Time System provides a mesh network for clock-to-clock transmission of synchronized time, eliminating the time related issues and liabilities associated with manual time maintenance. This easy-to-install system will provide years of trouble free service without the cost of expensive wiring.

The master transmitter obtains time updates from a network timeserver or optional GPS receiver. The time signal is then broadcast to all clocks once per second. Each battery-operated clock transmits up to 150 feet in all directions, repeating the synchronized time signal clock-to-clock, throughout an entire facility.

SyncTech is fully expandable allowing you to start with a system that fits your immediate needs, with the flexibility to add more devices and wireless solutions as needed.

### benefits

- SyncTech features automatic switching between Daylight and Standard Time and AES 128-bit data encryption for secure, reliable communications.
- SyncTech clocks operate for over seven years using standard alkaline batteries.
- SyncTech does not require an FCC license, alleviating a common bottleneck of traditional synchronized time system procurement.
- SyncTech clocks are available in select PPP analog models with multiple face graphics and finishes; and can be incorporated in the Message Centers, Information Boards and Parallel products. Digital LED wall clocks include an antiglare lens and auto brightness feature, and available in a variety of sizes.
- SyncTech is truly a plug-and-play synchronized time system, providing years of service.
- SyncTech 'UHF' can also incorporate an Emergency Message Notification System to instantly send text and/or pre-programmed audio messages and wireless time technology throughout a facility or across an entire campus.

For more information, see [peterpepper.com/synctech/](http://peterpepper.com/synctech/)

# finishes

Fresh Ideas are available in an array of colors, textures and finishes. To view the finishes on our website, go to [peterpepper.com/finishes](http://peterpepper.com/finishes)

Due to printing limitations, colors and textures approximate actual colors.

## FABRICS

### LIDO STYLE 2858



024  
Oak Bluffs



023  
Cape May

### CROSSTOWN STYLE 2526



010  
Cement



021  
Graphite

### SPRITE STYLE 2671



010  
Linen



012  
Sherbet



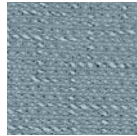
010  
Hermosa



030  
Newport



030  
Ray



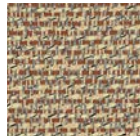
040  
Waterfront



020  
Butter



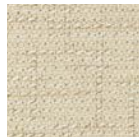
030  
Khaki



065  
Bryce Canyon



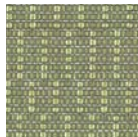
015  
Moonstone



050  
Chamois



060  
Fieldstone



031  
Kiwi



032  
Harvest



019  
Balboa



031  
Smith Point



070  
Stucco



080  
Buff



033  
Sky



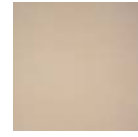
040  
Snow

To order Guilford of Maine Fabric samples, visit online sample service: [www.guilfordofmaine.com](http://www.guilfordofmaine.com)  
Optional: COM - Customers Own Materials are available on most tackable panels.

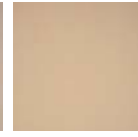


## COLORCORK

### PARALLEL



2187



2186



2202



Natural Cork

ColorCork samples available on request from Forbo Linoleum Inc. at 800 842 7839 x712

## WOOD + LAMINATES

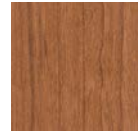
### GUEST CENTER + MESSAGE CENTER



Natural Maple **MA**



Honey Maple **HMA**



Light Cherry **LCH**



Cherry **CH**



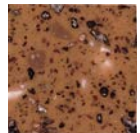
Mahogany **MM**



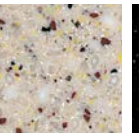
Walnut **W**

## TOP SURFACES

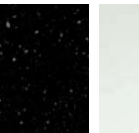
### GUEST CENTER (AVONITE SURFACE + GLASS)



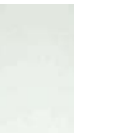
Red Rock



Fargo



Star Shine



Glass

## COG

### GUEST CENTER (SPECIALTY MATERIALS, CUSTOMER OWN GOODS)



## COLORS

### MESSAGE CENTER





PETER PEPPER PRODUCTS  
EXPRESSIVE ESSENTIALS®

PETER PEPPER PRODUCTS, INC.  
17929 S. Susana Road  
PO Box 5769  
Compton, CA 90224-5769

T: 800 496 0204  
T: 310 639 0390  
F: 310 639 6013  
W: [www.peterpepper.com](http://www.peterpepper.com)  
E: [info@peterpepper.com](mailto:info@peterpepper.com)

## 1.2 fresh ideas.

GUEST CENTER

MESSAGE CENTER

PARALLEL

SYNCTECH



GSA Federal Supply Service Catalog  
GS-28F-2062D SIN 71-399

