



GoTo Electrical Module Install

1. Remove nuts (2X's) from Electrical Module screws



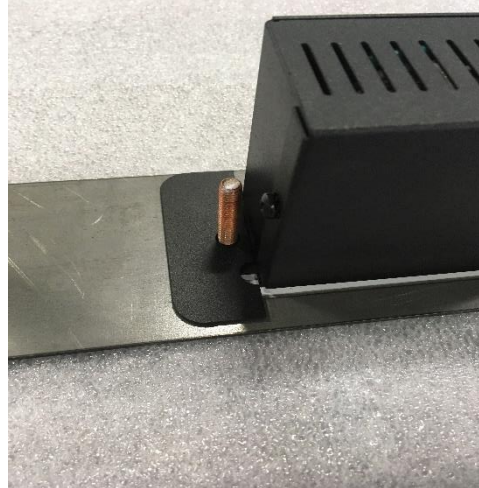
2. Insert Electrical Module through rectangle cutout in the GoTo Wall, GoTo Freestanding Table or the GoTo Pedestal



3. Remove the 1.25" Cove Brackets (2X's) from packaging



4. Place Cove Brackets (2X's) over Electrical Module screws



5. Reinstall and tighten nuts (2X's) on Electrical Module screws

